



2013 STAR CLASS SAILING INSTRUCTIONS

1. RULES

- 1.1 The regatta will be governed by the current Racing Rules of Sailing (RRS) and by the International Star Class Yacht Racing Association Rules (ISCYRA) except as by altered these sailing instructions.
- 1.2 The following US Sailing prescriptions or prescriptions to rules which apply are: Rules 61.4, 67, 76.1, 76.2, 82, 88.2, Appendix R, and prescriptions to Rules 70.5(a). See Attachment I. Other US SAILING prescriptions do not apply.
- 1.3 The regatta is open to Star Class boats which are in compliance with ISCYRA 21 and 26.
- 1.4 The Star Class weight limit will not be enforced for this regatta.
- 1.5 National letters and sail numbers shall be those entered on the entry form with no substitutions allowed. Bow identification numbers will be provided by the organizing authority and placed on both sides of the bow according to instructions issued with the bow numbers. Boats will be identified by bow numbers.
- 1.6 Where there is a conflict between the notice of race and the sailing instructions, the Jury will decide which applies.

2. NOTICES TO COMPETITORS

Notices to competitors will be posted on the Official Notice Board located in the north breezeway of Coral Reef Yacht Club (CRYC).

3. CHANGES TO THE SAILING INSTRUCTIONS

Any change to the sailing instructions will be posted before 0900 on the day it will take effect, except that any change to the schedule of races will be posted by 2000 on the day before it will take effect.

4. SIGNALS MADE ASHORE

- 4.1 Signals made ashore will be displayed on the Coral Reef Yacht Club flagpole.
- 4.2 When Flag AP is displayed ashore, '1 minute' is replaced with 'not less than 60 minutes'. This changes Race Signals AP.

5. SCHEDULE OF RACES

5.1 A Skipper's meeting will be conducted on Monday March 4th, 2013 at 0930 on the CRYC Pool Deck.

5.1(a) Schedule of racing:

Date - Day	Warning Signal
3/4 Monday	11:55 - two races planned
3/5 Tuesday	11:55 - one race planned
3/6 Wednesday	11:55 - one race planned
3/7 Thursday	11:55 - Reserve day
3/8 Friday	11:55 - two races planned
3/9 Saturday	10:55 - one race planned

5.2 The schedule above is subject to change due to weather conditions. Changes will be posted in accordance with SI 3.

5.3 The scheduled time of the warning signal for the first race each day is 11:55 from Monday to Friday and 10:55 on Saturday. On Saturday 3/9/13, no warning signal will be made after 1300.

5.4 After a long postponement, to alert boats that a race sequence will begin soon, Flag L will be displayed with one sound for at least four minutes before a warning signal. Flag L will be lowered 1 minute before the first warning signal with multiple sound signals. This changes Race Signal L.

6. CLASS FLAG

The Class Flag will be a red star on a white background.

7. RACING AREA

The racing area will be approximately 1.5 nm east of Matheson Hammock. (See Attachment 2)

8. THE COURSES

- 8.1 The race courses will be as described in ISCYRA 34.3, as modified by these sailing instructions and any subsequent changes to the sailing instructions. (See Attachment 3)
- 8.2 No later than the warning signal, the Race Committee Signal Boat will display the course number with the distance and magnetic bearing to the first mark.
- 8.3. Courses will not be shortened. This changes rule 32.2.
- 8.4 The length of the legs may be changed.

9. MARKS

- 9.1 Inflatable marks will be used for the course. A description of these marks will be posted on the Official Notice Board before racing begins.
- 9.2 A gate may be employed at mark 3. Boats shall sail between the gate marks and round either mark.
- 9.3. For courses “0” and “1” an offset mark will be set at mark 1 for all legs.

10. THE START

- 10.1 Races will be started by using rule 26.
- 10.2 The starting line will be between a staff displaying an orange flag on the starboard end Signal Boat and a staff displaying an orange flag on the port end pin boat.
- 10.3 A boat starting later than 10 minutes after her starting signal will be scored Did Not Start without a hearing. This changes rules A4.2 and A5.
- 10.4 Individual Recall - Rule 29.1: in addition, if an individual recall is signaled a Race Committee Boat displaying Code Flag X positioned near mark 1 will attempt to display bow numbers of the yacht(s) breaking this rule. Failure to receive notice is not grounds for redress.
- 10.5 Z Flag - Rule 30.2 add, if a general recall is signaled or the race is abandoned after the starting signal, the Race Committee Signal Boat will display the bow number(s) of boats breaking this rule and receiving a scoring penalty before the warning signal of the next race.
- 10.6 Black Flag - Rule 30.3 is changed. In the event of a general recall the Race Committee will post bow number(s) on the Signal Boat, OR in the absence of a general recall, as a courtesy, the Race Committee will attempt to display the bow number(s) of yachts breaking this rule, near mark 1. Failure to receive notice is not grounds for redress.

11. CHANGE OF THE NEXT LEG OF THE COURSE

To change the next leg of the course, the Race Committee will move the original mark or the finishing line to a new position, and the course will be reconfigured.

12. THE FINISH

The finishing line will be between a staff displaying an orange flag on a starboard end Race Committee Boat and a staff displaying an orange flag on a port end Race Committee Boat.

14. TIME LIMITS AND TARGET TIMES

- 14.1 If no boat has passed Mark 1 within 45 minutes, the race will be abandoned.
- 14.2 Boats failing to finish within 2 hours from the starting signal will be scored DNF TLE. This changes rules 35, A4.2, A5 and ISCYRA 34.3.7
- 14.3 Boats failing to finish within 30 minutes after the first boat sails the course and finishes will be scored DNF TLE without a hearing. This changes rules 35, 63.1, A4.2 and A5.

15. INTERNATIONAL JURY

An International Jury will be constituted in compliance with Appendix N, rules 70.5 and 91(b).

16. PROTESTS AND REQUESTS FOR REDRESS

- 16.1 Boats intending to file a protest shall notify a Race Committee Boat of her intention and the boat being protested as soon as practical following her finish. This changes RRS 61.3.
- 16.2 The time limit for requesting a hearing or requesting redress is one hour after the Signal Boat docks. The Signal Boat will post the docking time, finish results, and actions of the Race Committee including protests as soon as practical after docking.
- 16.3 Protest forms will be available at the Jury Desk inside the Main Lobby at Coral Reef Yacht Club. The protest schedule board will be situated at the Jury Desk in the Main Lobby. The protest time will be posted on the Notice Board. The same protest time limit applies to all protests by the Race Committee and Jury about incidents they observe in the racing area and to request redress. This changes RRS 61.3 and 62.2

- 16.4 Notices will be posted on the Official Notice Board within 30 minutes of the protest time limit to inform competitors of hearing in which they are parties or named as witnesses. Hearings will be held in order received.
- 16.5 Boats scored as having not started or not finished will be posted on the Notice Board within 30 minutes before the end of protest time. Any boat feeling an error has been made may request a scoring inquiry which must be in writing and delivered to the Jury Secretary within the protest time limit.
- 16.6 On the last day of racing, a request for reopening a hearing shall be delivered:
- 16.6.1 Within the protest time limit if the requesting party was informed of the decision on the previous day;
 - 16.6.2 No later than 30 minutes after the requesting party was informed.
- 16.7 On the last day of racing, a request for redress based on a Jury decision shall be delivered no later than 30 minutes after the decision was posted. This changes RRS 62.2
- 16.8 Protest Hearings will be held at CRYC Monday (March 4) – Wednesday (March 5) and at Biscayne Bay Yacht Club located next door to CRYC Thursday (March 6) – Saturday (March 9).

17. SCORING

- 17.1 The Low Point scoring system shall be employed.
- 17.2 Seven races are scheduled. One completed race is required to constitute a series.
- 17.3 When five (5) or more races have been completed, a boats series score will be the total of her race scores excluding her worst race.
- 17.4 Penalties for violations of the notice of race, sailing instructions and the Racing Rules of Sailing which are not a Part 2 or Part 3 infringement are at the discretion of the International Jury and may include disqualification.
- 17.5 Scores will be posted on the Notice Board at CRYC and the Official Notice Board at the Bacardi Hospitality Tent.
- 17.6 Boats failing to meet the time limits of SI 14.2 and 14.3 will be scored without a hearing Did Not Finish Time Limit Expired (DNF TLE).
- 17.7 The score for DNF TLE will be one more point than the number of boats finishing within the time limit. This changes rule A4.2.

18. PRIZES

Prizes will be given as follows:

- 18.1. A prize for the first place boat in the series for the Masters Division (skippers age 50 through 59 before the start of the first race),
- 18.2. A prize for the first place boat in the series for the Grand Masters Division (skippers age 60 and above before the start of the first race),
- 18.3. Competitors in the Master's Division and Grand Master's Division will also compete for series prizes,
- 18.4. Prizes for the first, second, third, fourth and fifth place boats in the series, and
- 18.5. The perpetual Bacardi Cup for the first place skipper and the Tito Cup for the first place crew in the series.

19. CHECK IN, SAFETY REGULATIONS, RETIRING

- 19.1 Prior to the first race, a boat sails each day, each boat shall sail on starboard tack past the transom of the Signal Boat before the first warning and hail her bow or sail number until acknowledged by the Race Committee. RRS A4.1 is changed to provide that boats not complying with this instruction will receive the same score as a boat not starting without a hearing. This changes RRS 63.1 and A5.
- 19.2 Boats in need of assistance from the Race Committee will wave an extended arm in the direction of any Race Committee vessel.
- 19.3 Boats retiring from racing will notify a Race Committee boat or if not practical inform the Front Desk at Coral Reef Yacht Club.

20. SUPPORT AND COACH BOATS

- 20.1 Team leaders, coaches and other support personnel are expected to monitor VHF 71 and to render assistance to a boat in danger when requested by the boat or the Race Committee or Jury.
- 20.1 Team leaders, coaches and other support personnel shall stay outside areas where boats are racing from the time of the Warning signal until all boats have finished or retired or the Race Committee signals a postponement, general recall or abandonment.
- 20.2 Interference with boats racing or producing a race disturbing wake may result in expulsion from CRYC and the US Sailing Center.

21. REPLACEMENT OF CREW OR EQUIPMENT

21.1 A change of helmsman is not permitted.

21.2 Substitution of competitors will not be allowed without prior written approval of the Jury. Once a crewmember has changed, the original crew may not return. There shall be no crew exchange on the final day of racing.

22. TRASH DISPOSAL, CLOTHING AND EXTRA SAILS

22.1 Boats shall not put trash in the water. Trash may be placed aboard support and Race Committee Boats.

22.2 The Race Committee will not accept items of clothing or sails.

23. RADIO COMMUNICATION

ISCYRA will be amended to allow VHF radios to be carried on all boats for safety purposes.

24. EQUIPMENT AND MEASUREMENT CHECKS

A boat or its equipment may be inspected at any time for compliance with class rules.

25. HAUL OUT - BERTHING

There are no haul out or berthing restrictions.





ADDENDUM 1

2013-2016 US SAILING PRESCRIPTIONS Applicable to Star Bacardi Miami Sailing Week – March 4- March 9, 2012

Equal Opportunity

As the national authority for the sport of sailing, US Sailing is committed to providing an equal opportunity to all sailors to participate in the sport of sailing.

Rule 61.4: Fees for Protests and Requests for Redress

US Sailing prescribes that no fees shall be charged for protests or requests for redress.

Rule 67: US Sailing prescribes that:

(a) A boat that retires from a race or accepts a penalty does not, by that action alone, admit liability for damages.

(b) A protest committee shall find facts and make decisions only in compliance with the rules. No protest committee or US Sailing appeal authority shall adjudicate any claim for damages. Such a claim is subject to the jurisdiction of the courts.

(c) A basic purpose of the rules is to prevent contact between boats. By participating in an event governed by the rules, a boat agrees that responsibility for damages arising from any breach of the rules shall be based on fault as determined by application of the rules, and that she shall not be governed by the legal doctrine of 'assumption of risk' for monetary damages resulting from contact with other boats.

Rule 76.1- *US Sailing prescribes that an organizing authority or race committee shall not reject or cancel the entry of a boat or exclude a competitor eligible under the notice of race and sailing instructions for an arbitrary or capricious reason or for reason of race, color, religion, national origin, gender, sexual orientation, or age.*

Rule 76.2 -*The organizing authority or the race committee shall not reject or cancel the entry of a boat or exclude a competitor because of advertising, provided the boat or competitor complies with ISAF Regulation 20, Advertising Code*

Rule 82: INDEMNIFICATION OR HOLD HARMLESS AGREEMENTS

US Sailing prescribes that the organizing authority shall not require a competitor to assume any liabilities of the organizing authority, race committee, protest committee, host club, sponsors, or any other organization or official involved with the event. (This is commonly referred to as an 'indemnification' or 'hold harmless' agreement.) Go to ussailing.org/racing/rules/documents and click the 'Indemnification' link for more information.

Rule 88.2 - *US Sailing prescribes that sailing instructions shall not change or delete rule 61.4, Appendix R, or its prescriptions to rules 40, 67 or 76.1. However, for an international event the prescription to rule 40 may be deleted.*





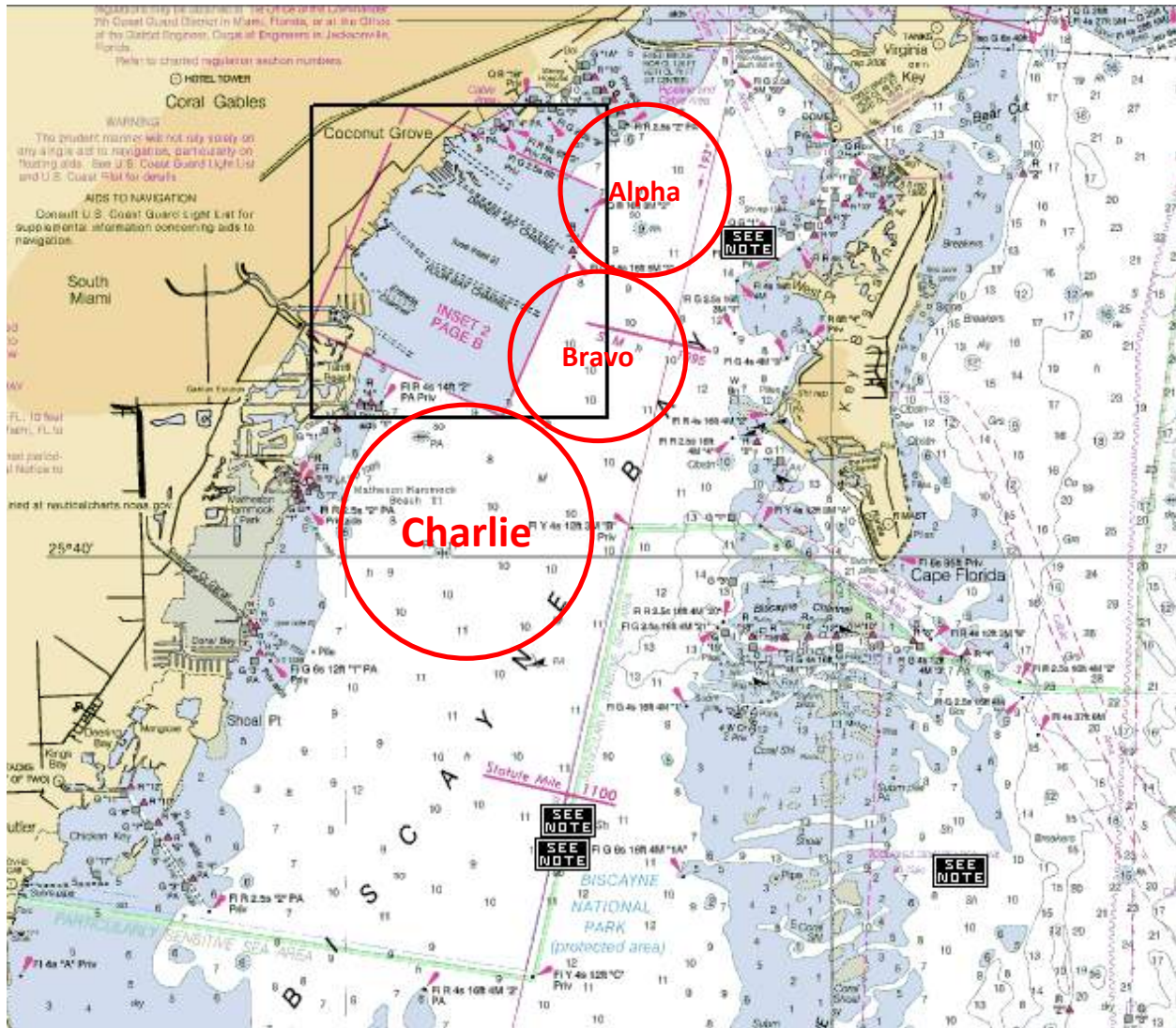
ADDENDUM 2

Bacardi Miami Sailing Week – Racing Circles 2013

Viper 640 / J80 / J70's on **ALPHA** Circle

Melges 24 & 20's are on **BRAVO** Circle

Star's are on **CHARLIE** Circle



- | | | |
|----------------|-------------------|--|
| ALPHA | Diameter – 1.5 nm | Center – N 25 43.200 W 080 11.800 |
| | | Radio channels – 72 and 73 (or private?) |
| BRAVO | Diameter – 1.5 nm | Center – N 25 41.800 W 080 13.100 |
| | | Radio channels – 69 and 74 |
| CHARLIE | Diameter – 2.0 nm | Center – N 25 40.200 W 080 14.800 |
| | | Radio channels – 71 and Private |



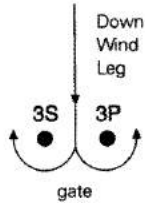
ADDENDUM 3

<p>Course "1"</p> <p>Start 1 2 3 1 (or 1 + offset mark) Finish (downwind)</p> <p>○ = optional offset mark</p>	
<p>Course "2"</p> <p>Start 1 2 3 1 (or 1 + offset mark) 3 (or gate 3A - 3B) 1 2 3 Finish (upwind)</p>	<p>The same Course as Course "0"</p> <p>Course 2 may not be used at Gold events, and may only be used at Silver events with approval of the continental committee. (STCR 34.3.1)</p>



Star Class Courses
(STCR 34.3 and 34.4)

In case of small regattas the starting line may be set up at mark 3 and the finishing line at mark 1 or mark 3.



Courses 0, 1, 2, 3 and 4 are diagramed as described in STCR 34.3 and modified in the diagrams as allowed by STCR 34.4.

In Gold and Silver events, Course 0, 1, 3 or 4 shall be used. Course 2 may be used in Silver events if requested by the sponsoring fleet and approved by the Continental Committee.

In Blue and Green events Course 0, 1, 2, 3, and 4 shall be used.

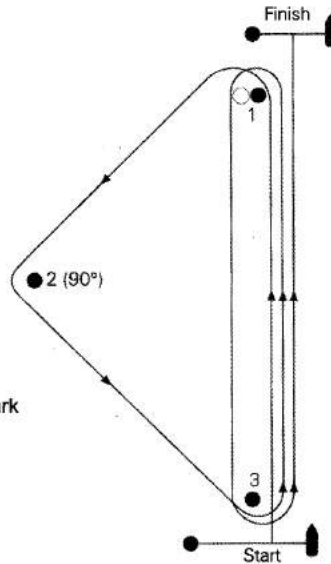
No course may be shortened during Gold, Silver, Blue or Green Events.

In Red events and Qualifications the above courses are not mandatory and may be shortened.

Course "0"

Start
1
2
3
1
3 (or gate 3A – 3B)
Finish (upwind)

○ = optional offset mark



Course "3"

Start

1

2

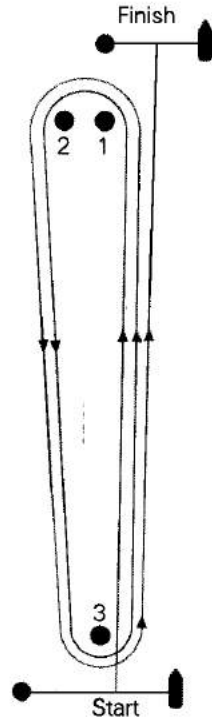
3 (or gate 3A-3B)

1

2

3 (or gate 3A-3B)

Finish (upwind)



Course "4"

Start

1

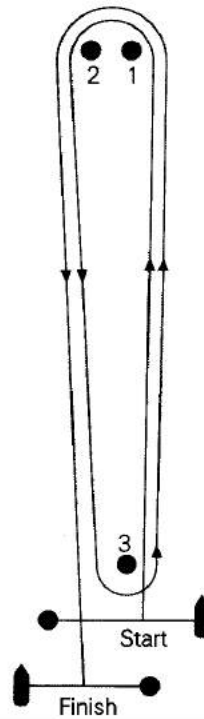
2

3 (or gate 3A - 3B)

1

2

Finish (downwind)





SAILING INSTRUCTIONS

1. RULES

- 1.1 The 2013 Bacardi Miami Sailing Week and the Audi Melges 20 Miami Winter Series No. 3 will be governed by the *rules* as defined in the current Racing Rules of Sailing (*RRS*).
- 1.2 The following Prescriptions of US Sailing are the only Prescriptions that will apply: Appendix R and prescriptions to rules 61.4, 67 and 76.1.
- 1.3 These Sailing Instructions (SI's), including amendments, will take precedence in the case of a conflict with the Notice of Race (NOR). This changes RRS 63.7.

2. RADIO COMMUNICATION

- 2.1 All competing boats shall carry a hand held VHF radio capable of transmitting and receiving VHF channels (US) for safety purposes and Race Committee communication.
- 2.2 The Race Committee's VHF channel will channel 69.
- 2.3 Race Committee broadcasts concerning its intentions, the course to be sailed, starting times, course changes, OCS hails, etc. are a courtesy only. Failure of the Race Committee to make a broadcast, the timing of a broadcast, or the failure of a boat to hear a broadcast shall not be grounds for redress under rule 62.1(a).
- 2.4 Except from the specified Race Committee VHF channel, no competitor shall make or receive radio or cell phone communications commencing from the first Warning Signal of the day until the conclusion of the day's racing, except in the case of an emergency.
- 2.5 The Race Committee will attempt to announce its intentions for the day on the Race Committee VHF radio channel at 0900 each morning of the event.
- 2.6 In the event of an onshore Postponement, the Race Committee shall make update announcements on the Race Committee VHF radio channel.

3. NOTICES TO COMPETITORS

- 3.1 Notices to competitors will be posted on the official notice board located on the first floor of the Coconut Grove Sailing Club (CGSC).

4. CHANGES TO SAILING INSTRUCTIONS

- 4.1 Any changes will be posted by 0830 on the day they will take effect, except that any changes in the Schedule of Races will be posted no later than one (1) hour after the latest protest time limit on the day before they take effect (SI 16.2). In the event of no racing on a day, any changes in the Schedule of Races will be posted no later than 1700 hours on the day before they take effect.
- 4.2 Oral changes to the Sailing Instructions may be given on the water. The Race Committee Signal Boat shall display Code Flag "L" and announce the change on the Race Committee VHF Channel in accordance with rule 90.2(c). Competitors may also approach the Signal Boat and verbally receive the change while Code Flag "L" is displayed.

5. SIGNALS MADE ASHORE

- 5.1 Signals made ashore will be displayed from the main flagpole at the CGSC.
- 5.2 Code Flag "L", when displayed ashore signifies that a change in Sailing Instructions or other notice to competitors has been posted on the Official Notice Board.
- 5.3 Code Flag "AP" when displayed ashore means that the start has been postponed. The Warning Signal will be made not less than 60 minutes after the lowering of this signal.
- 5.4 Code Flag "N" over "A" and 3 sounds when signaled ashore means that all racing is abandoned for today.

6. SCHEDULE OF RACES

- 6.1 March 7, 8 & 9, 2013 Up to 8 races are scheduled
- 6.2 The Skipper's Meeting will be at CGSC at 1800 on Wednesday, March 6th.
- 6.3 The scheduled time for the Warning Signal for the first race each day is 1055 hours.
- 6.4 The starting order shall be Melges 24's followed by the Melges 20 class.
- 6.4 The Race Committee Finishing Boat will signal its intent to start another race that day by displaying Code Flag "R" at the finish of a race. Code Flag "R" will be lowered with one sound, one minute before the next Warning Signal is made.
- 6.5 On the final day of the regatta, the Initial Warning Signal for the final race will not be made after 1400 hours. However, after this Initial Warning, any Warning Signal that follows one or more General Recalls or Postponements may occur after 1400.

7. RACING AREAS

- 7.1 All racing will be on Biscayne Bay in an area approximately 1 to 3 miles SSE of Brennan Channel Marker "1" (Fl.G 5sec 8ft).

8. THE COURSES

8.1 Courses are described below and in "ADDENDUM #1- COURSE ILLUSTRATIONS".

8.2 Course Designations:

COURSE # 4 - Start - W - OS - Leeward Gate - W - OS - Finish

COURSE # 5 - Start - W - OS - Leeward Gate - W - OS - Leeward Gate - Finish

8.3 The Windward Mark (W) and the accompanying offset mark (OS) shall be left to port.

8.4 Courses will be posted on a Race Committee Signal Boat course board prior to the Warning Signal of each race. The number of the course to be sailed, the approximate magnetic compass bearing, and distance from the starting line to the first mark will be displayed. (This changes *RRS 27.1*)

9. MARKS

9.1 The original Windward Mark (W) will be a yellow inflatable mark.

9.2 The Windward Offset Mark (OS) will be a round inflatable mark. The Offset Mark will be laid to port of the Windward Mark, approximately 200 feet away.

9.3 A Leeward Gate will be used and the original Leeward Gate marks will be red inflatable marks.

9.4 Except when there is a change of course, the Gate will be located to windward of the starting line. Boats shall sail between the Gate marks from the direction of the previous mark and round either Gate mark.

9.5 If one of the Leeward Gate marks is missing, boats shall round the one existing leeward mark to port.

10. THE START

10.1 Races will be started in accordance with *RRS 26*.

10.2 The class flags will be the Melges 24 Insignia on a white flag and the Audi Melges 20 Insignia on a white flag.

10.3 MELGES 24 STARTING LINE:

The starting line will be between a staff displaying an orange flag on the Race Committee signal boat and a staff displaying an orange flag on a port end line boat. In the event that the pin end boat is not on station, it will be replaced by an inflatable mark.

10.4 MELGES 20 STARTING LINE:

The starting line will consist of three RC boats: port end line boat, mid-line signal boat, and starboard end line boat.

The starting line will be two line segments: one between a staff displaying an orange flag on the mid-line signal boat and a staff displaying an orange flag on the port end line boat, the other between a staff displaying an orange flag on the mid-line signal boat and a staff displaying an orange flag on the starboard end line boat. In the event that either pin end boat is not on station, it will be replaced by an inflatable mark.

- 10.5 **For Melges 20's only**, when RRS 30.1 Round-an-End Rule is in effect, boats subject to this rule shall thereafter either: (a) sail from the course side across an extension of the starting line beyond either the port- or starboard-end line boat to the pre-course side before starting, or (b) round the mid-line signal boat before starting, leaving it to port. This changes RRS 30.1 (see the diagram below).



- 10.6 An inflatable buoy may be tethered to the stern of the committee boat(s) and will function as an extension of the Race Committee boat(s). Boats shall not pass between the Race Committee vessel and an inflatable buoy tethered to it.
- 10.7 A boat starting later than four (4) minutes after her starting signal will be scored Did Not Start (DNS) without a hearing. (This changes RRS A4.1)

11. **RECALLS**

- 11.1 In the event of an individual recall, the sail numbers, bow numbers or identification of any boat or boats that are identified as OCS may be announced on the Race Committee VHF channel. Failure of a boat to see or hear her recall notification, and the timing and order of such hails, or the length of time it takes to make a notification on the Race Committee VHF channel will not be grounds for redress. (This changes RRS 62.1 (a).)
- 11.2 The Race Committee may hail the bow numbers or sail numbers of boats that are over the line in the last one (1) minute of the starting sequence after the I or Z Flag has been lowered. Failure of a boat to hear her recall notification, and the timing and order of such hails will not be grounds for redress. (This changes RRS 29.1 and 62.1 (a).)

12. **CHANGING THE NEXT LEG OF THE COURSE**

- 12.1 If the change is for a windward leg, the new mark will be an orange inflatable tetrahedron, unless the change is for the final leg of Course 5, which in that case, the finish line will be in the new position.
- 12.2 If the change is for a leeward leg, the new gate marks will be yellow inflatables, unless the first change is for the final leg of Course 4, which in that case, the finish line will be in the new position.

13. **FINISH**

- 13.1 The Finish Line for leeward finishes (Course 4) will be between a staff displaying an orange flag on a Race Committee Boat and a nearby inflatable mark, or between staffs displaying orange flags on Race Committee Boats.
- 13.2 The Finish Line for windward finishes (Course 5) will be between a staff displaying an orange flag on a Race Committee Boat and a nearby inflatable mark to port of the Committee Boat, or between staffs displaying orange flags on Race Committee Boats.

14. PENALTY SYSTEM

- 14.1 A boat that may have broken a rule of RRS Part 2 may take a One-Turn Penalty including one tack and one jibe. (This changes RRS 44.1.).
- 14.2 The penalty, if any, for a violation of a rule other than a rule of RRS Part 2 or Rule 31 will be at the discretion of the Protest Committee and may be other than disqualification. This changes RRS 64.1(a).
- 14.3 If a breach of class rules is found, penalties shall be at the discretion of the Protest Committee, in consultation with a non-competing Class Representative.

15. TIME LIMITS

- 15.1 Any race in which no boat rounds the first windward mark within 45 minutes, or finishes within two (2.0) hours of the start shall be abandoned.
- 15.2 Boats failing to finish within 30 minutes after the first boat sails the course and finishes will be scored Did Not Finish (DNF) without a hearing. This changes RRS 35 and A4.2.

16. PROTESTS AND REQUESTS FOR REDRESS

- 16.1 A boat intending to protest is requested to notify a Race Committee Finish Boat of its intention and the identity of the protested boat(s) as soon as possible after finishing.
- 16.2 **Protest forms will be available at the Jury desk at Biscayne Bay Yacht Club** (2540 S. Bayshore Dr. -- just past Shake-A-Leg from CGSC). Protests and requests for redress shall be delivered to the Jury desk within the protest time limit. The time limit is one (1) hour after the Race Committee Finish Boat docks. Protest hearings will be conducted at Biscayne Bay Yacht Club as soon as possible and in the approximate order in which they were filed.
- 16.3 Notices will be posted no later than 15 minutes after the protest time limit to inform competitors of hearings in which they are parties to or named as witnesses. It is each boat's sole responsibility to check the Protest Notice Board to see if she is cited in a protest. Should any party fail to appear when called for a hearing, the Protest Committee may proceed in accordance with RRS 63.3(b). Representatives of boats who are parties to hearings and their witnesses shall remain on call in the vicinity of the Regatta desk until excused by the Protest Committee.
- 16.4 On the last day of the regatta a request for reopening a hearing shall be delivered (a) within the protest time limit if the party requesting reopening was informed of the decision on the previous day; (b) no later than 30 minutes after the party requesting reopening was informed of the decision on that day. This changes rule 66.
- 16.5 On the last scheduled day of racing a request for redress based on a protest committee decision shall be delivered no later than 30 minutes after the decision was posted. This changes rule 62.2.
- 16.6 If the RC posts the results on the official notice board before the protest time limit, a request for redress based on being scored OCS, ZFP or BFD shall be made no later than 30 minutes after the protest time limit. This changes the first sentence of rule 62.2.

16.7 The representative from each yacht who attends the hearing shall be the owner or the helmsman. Category 3 sailors are not allowed in the hearing, or to be in contact with the representatives at the hearing per class rules.

16.8 Video and photos taken from any support and/or coach boat shall not be used as evidence at protest hearings. This alters *RRS* 63.6.

17. SCORING

17.1 The Low Point Scoring System, as provided in *RRS* Appendix "A" shall apply, except as changed in this Section of these Sailing Instructions as follows.

17.2 When fewer than six (6) races have been completed, a boat's series score will be the total of her race scores. When six or more races have been completed, a boat's series score will be the total of her race scores excluding her worst score. Two races are required to be completed to constitute a series.

18. BOW NUMBERS

18.1 For Melges 24's, bow numbers will be provided to all registrants and shall be displayed on both sides of the bow. The leading edge of each bow number shall be no farther back than 10 inches aft of the bow. Boats failing to properly display bow numbers may be subject to protest by the Race Committee only.

18.2 Each Melges 20 shall have clearly visible bow numbers as provided by the manufacturer. Boats failing to properly display bow numbers may be subject to protest by the Race Committee only.

19. LAUNCHING & HAUL OUT REQUIREMENTS

19.1 All boats must be in the water by 1700 on the day before racing begins.

19.2 All boats are to remain in the water for the duration of the regatta except according to the terms, and with permission of the Principal Race Officer or the Regatta Chairman in the event of a required emergency repair.

20. TEAM AND PRIVATE SUPPORT BOATS

20.1 Competitors are responsible for the compliance of their support boats with their respective Class Rules concerning their activities on the water.

20.2 Support boats are required by the Race Committee to monitor the Race Committee VHF Channel and provide assistance to any competitor in danger if notified to do so by the Race Committee.

21. PRIZES

21.1 The top five boats overall in each class shall receive Series trophies. In addition, the top three placing all Corinthian Audi Melges 20's will receive prizes.

21.2 For the Audi Melges 20 Miami Winter Series overall, the top five boats will receive prizes. In addition, the top overall placing all Corinthian team will receive a prize.

22. **SAFTY REQUIREMENTS**

22.1 A boat that retires from a race or does not intend to start a scheduled race shall promptly report this to the Race Committee via hailing or calling on the Race Committee VHF channel, and receive acknowledgement. If this is not possible, she shall promptly report her actions to the Regatta desk on shore at CGSC.

23. **DISCLAIMER OF LIABILITY**

23.1 Sailing is an activity that carries with it an inherent risk of damage and injury. Competitors participate in this regatta entirely at their own risk and are reminded to pay special attention to RRS 4, Decision to Race. The race organizers, including the OA, Coconut Grove Sailing Club, Melges Performance Sailboats, Race Committee, Protest Committee, sponsors, volunteers, or any other affiliated organization or official, will not be responsible for damage to any boat or other property or the injury to any competitor, including death, sustained as a result of practice for or participation in this event on the water or ashore. By participating in this event, each competitor agrees to release the race organizers from any and all liability associated with such competitor's participation in this event to the fullest extent permitted by law.

CGSC Regatta Chairman: Ron Rostorfer
Principal Race Officer: Bruce Golison
AM20CA Administrator: Joy Dunigan

ADDENDUM #1 - COURSE ILLUSTRATIONS

EXAMPLE: COURSE BOARD DISPLAYED ON R/C SIGNAL BOAT

Course: 4
Distance To W: 1.0
Bearing To W: 120

COURSE # 4 (Leeward Finish)

Start - W - OS - Leeward Gate - W - OS - Finish



M24 Start ⌘ ----- ⌘ R/C ⌘ ----- ⌘ Finish (M24 & M20 finishes)

(2 part Melges 20 starting line not shown – see below for diagram)

COURSE # 5 (Windward Finish)

Start - W - OS - Leeward Gate - W - OS - Leeward Gate - Finish

Finish ⌘ ----- ⌘ R/C



M24 Start ⌘ ----- ⌘ R/C

(2 part Melges 20 starting line not shown – see below for diagram)

Melges 20 two part starting line (per SI 10.4):

Pin Boat ⌘ ----- ⌘ Signal Boat ⌘ ----- ⌘ Pin Boat



Bacardi Miami Sailing Week

March 7 – 9, 2013

Viper 640, J/80 and J/70 Classes

Sailing Instructions

1 RULES

- 1.1 The regatta will be governed by the rules as defined in *The Racing Rules of Sailing* (RRS).
- 1.2 Class specific *rule* changes and updates are shown in Attachment III.

2 NOTICES TO COMPETITORS

- 2.1 Notices to competitors will be posted on the regatta notice board located in the Bacardi Village.
- 2.2 The race committee will use VHF channel 68 to communicate with competitors on the water. Failure to hear any broadcasts shall not be grounds for redress.

3 CHANGES IN SAILING INSTRUCTIONS

Any changes will be posted before 0800 on the day it will take effect, except that any change in the schedule of races will be posted before 2000 the day before the change is to take effect.

4 SIGNALS MADE ASHORE

- 4.1 Signals made ashore will be displayed from the flagpole located at Biscayne Bay Yacht Club.
- 4.2 When flag AP is displayed ashore, '1 minute' is replaced by 'not less than 45 minutes' in the race signal.

5 CLASS FLAG

Class flags will be a white flag with the class insignia.

6 SCHEDULE

Thu, Mar 7 – Sat, Mar 9

- 1055 First Warning, subsequent races to follow.
- No warning after 1400 on Saturday.

7 THE COURSES

- 7.1 The diagrams and descriptions in Attachment II show the courses, including the approximate angles between legs and the order in which marks are to be passed.
- 7.2 If only one leeward mark is present it shall be rounded to port.
- 7.3 The course identifier, approximate magnetic bearing and distance in nautical miles to the first mark will be displayed from the race committee signal boat prior to the warning signal for each race.

An example is shown below:

5	Five legs, finishing to weather
270	Approx magnetic bearing to weather mark
1.0	1.0 nm to weather mark

8 MARKS

- 8.1 The windward mark will be red with EFG logo. The leeward marks will be red with Bacardi logo. The starting mark will be yellow with West Marine logo. The finish mark will be a yellow tetrahedron. The offset mark will be a small orange ball.
- 8.2 New marks, as provided in SI 11, will be orange cylinders.

9 THE START

The starting line will be between a staff displaying an orange flag on the race committee signal boat at the starboard end and either (a) the course side of the starting mark or (b) a staff displaying an orange flag on a boat at the port end.

10 RECALLS

- 10.1 When an individual recall is signaled, the race committee will attempt to hail OCS boats on VHF.
- 10.2 The timing and order of such hails or the failure of a boat to hear the hail shall not be grounds for redress, changing RRS 62.





11 CHANGE OF THE NEXT LEG OF THE COURSE

To change the next leg, the race committee will lay a new mark (or move the finishing line) and remove the old mark as soon as practicable. When in a subsequent change a new mark is replaced, it will be replaced by an original mark.

12 THE FINISH

The finishing line will be between a staff displaying an orange flag on a race committee boat and the course side of the finishing mark.

13 TIME LIMITS

- 13.1 If no boat has passed Mark 1 within 45 minutes, the race will be abandoned.
- 13.2 The time limit for the first boat to sail the course and finish is 90 minutes.
- 13.3 Boats still racing more than 15 minutes after the first boat sails the course and finishes will be scored TLE (Time Limit Expired) without a hearing. This changes RRS 35, A5, and A11.

14 PROTESTS AND REQUESTS FOR REDRESS

- 14.1 Protest forms are available in the Jury Room located at Biscayne Bay Yacht Club and shall be delivered there within the protest time limit which is 60 minutes after the race committee finish boat docks after the last race of the day.
- 14.2 The race committee will post a list of penalties being assigned by the race committee prior to the end of protest time limit. The deadline for requesting redress based on these scores will be either 30 minutes after posting of the penalty notice or the protest time limit, whichever is later. This changes RRS 62.2.
- 14.3 Notices will be posted within 15 minutes of the protest time limit to inform competitors of hearings and arbitration hearings in which they are parties or named as witnesses. Hearings will be held in the Jury Room, beginning as soon as practical.
- 14.4 On the last day of the regatta a request for reopening a hearing shall be delivered (a) within the protest time limit if the party requesting reopening was informed of the decision on the previous day; (b) no later than 30 minutes after the party requesting reopening was informed of the decision on that day. This changes RRS 66.

15 PENALTY SYSTEM FOR VIPERS

RRS 44.1 is changed so that a Two-Turn Penalty is replaced by a One-Turn Penalty except for breaches of RRS 18.

16 SCORING

- 16.1 Eleven races are scheduled. Three races are required to be completed to constitute a regatta.
- 16.2 Each boat's regatta score shall be the total of her race scores excluding her worst score, except that if less than five races are sailed, each boat's series score shall be the total of her race scores.
- 16.3 Boats scored TLE will be scored points equal to the number of boats finishing within the time limit plus two points. This changes RRS 35, A4.2 and A11.

17 SAFETY

- 17.1 Prior to the warning signal for the first race of each day in which it intends to compete, each boat is requested to check in by VHF or sail by the race committee signal boat and hail its sail number.
- 17.2 A boat retiring from a race or leaving the racing area early shall promptly notify the race committee either by hail, over VHF, or by telephone to the Event Chairman at 305-915-1438.

18 CREW

- 18.1 No changes to crew shall be allowed except with written approval of the Protest Committee.
- 18.2 Requests for replacement of crew and any reply shall be posted on the regatta notice board.
- 18.3 The same number of persons shall sail throughout the event.

19 RADIO EQUIPMENT

A boat shall neither make radio or other data transmissions while racing nor receive radio or mobile phone communication not available to all boats, except for emergencies.

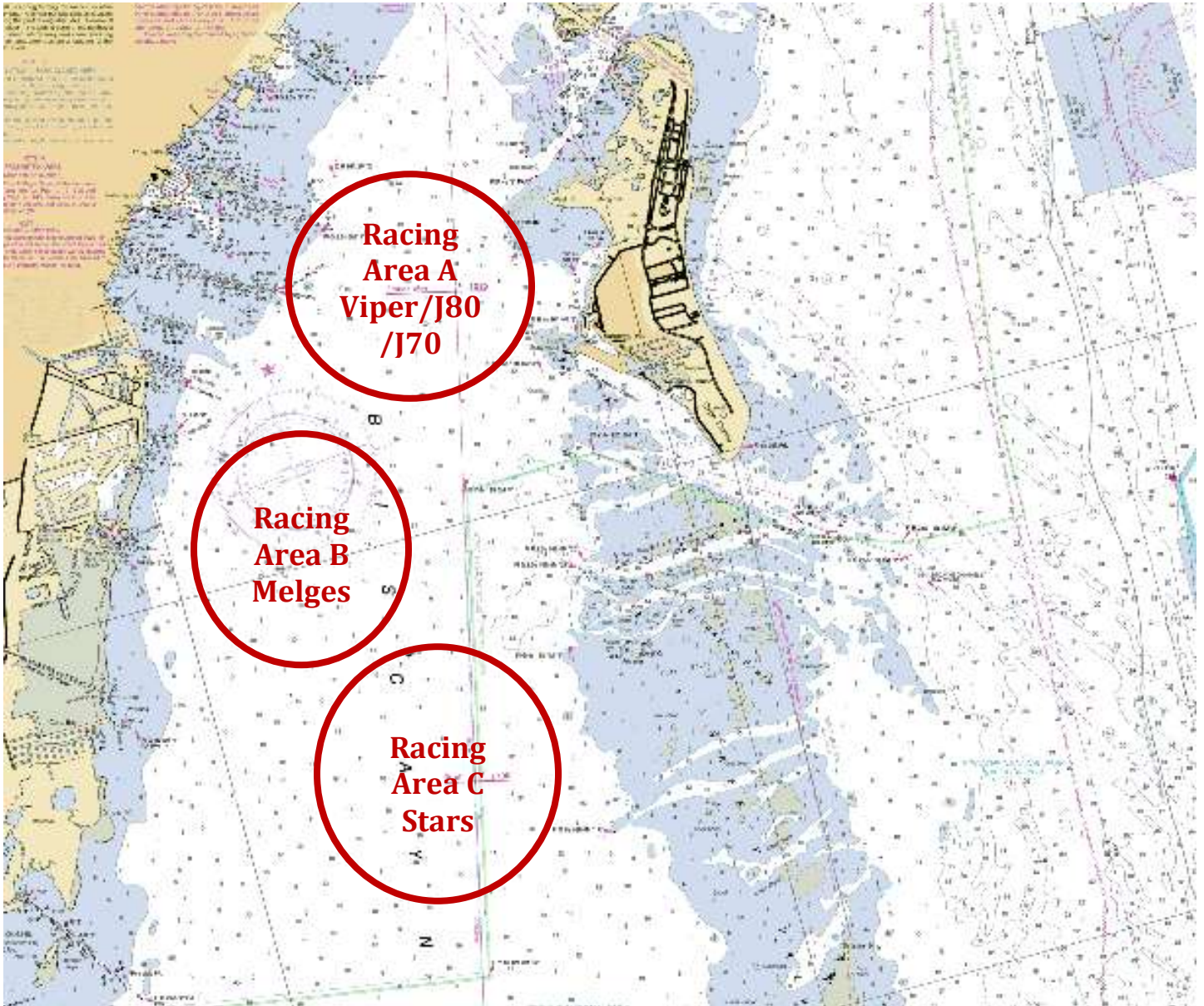
20 DISCLAIMER OF LIABILITY

Competitors participate in the regatta entirely at their own risk. See rule 4, Decision to Race. The organizing authority will not accept any liability for material damage or personal injury or death sustained in conjunction with or prior to, during, or after the regatta.





Attachment I – Approximate Racing Areas



MIAMI SAILING WEEK





Attachment II: COURSE DIAGRAMS

Course 4		Course 5
<p>Start, 1 (port), 1a (port), between 2S and 2P, 1(port), 1a (port), finish</p>		<p>Start, 1 (port), 1a (port), between 2S and 2P, 1(port), 1a (port), between 2S and 2P, finish</p>



MIAMI SAILING WEEK





Attachment III: Class Specific *Rule* Changes and Updates

1 The following *rules* are changed for Vipers:

- 1.1 The Viper Notice of Race Class Addendum is changed to prohibit coaching while *racing*.
- 1.2 There are no minimum or maximum crew weight limits for this regatta, but boats shall race with three or four aboard.

2 The following *rules* are changed for J/70s:

- 2.1 RRS 42.3(c) is changed to allow the gennaker sheet to be played without restriction.
- 2.2 As permitted in J/70 Class Rules, Section I, the following changes are made for this event:

2.2.1 Spare Gennaker

One spare class gennaker (that meets the requirements of C.10, G.2 and G.5) may be presented for measurement and registration for an event, and carried aboard, but shall not be used during an event except when the primary gennaker has been lost or damaged to the point where it cannot be effectively repaired while afloat.

2.2.2 Support Boats

Individual support or coach boats shall not have contact of any nature, including:

- (i) communication by radio, telephone, internet, vocal signal, visual signaling of any kind (i.e., tactical placement, use of flags and/or different colors of clothing) or
- (ii) the transfer of crew, equipment or supplies, with a registered racing boat from the time the boat leaves its dock or mooring each day until the boat has finished racing for the day.

Notwithstanding the foregoing, (i) late arriving crew, food and drink may be transferred to a racing boat prior to the first race of the day, and (ii) crew may be transferred in the event of an unforeseen personal emergency. Infringements of this rule will result in a penalty to the boat associated with the support boat. Such penalty may be either penalties or disqualification at the discretion of the protest committee or jury.

